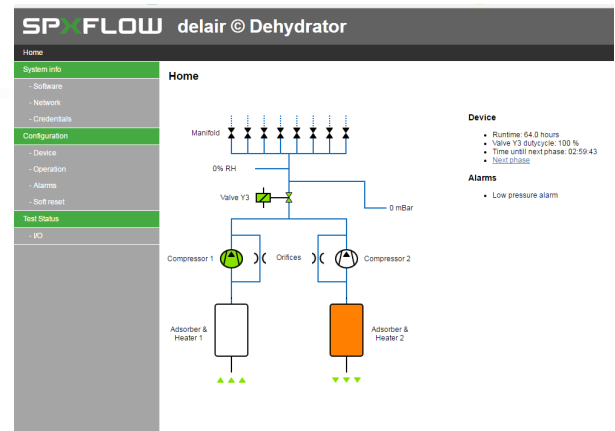


Delair® Etsiline CommPact



Why Delair® Etsiline CommPact?

- **Internet communication / web interface**
- **No maintenance**
- **Compact design**
- **Standard 8 outlets, each with shut-off valve**
- **Dry air capacity > 120 l/h**
- **Low noise / low vibration**
- **Remote sense input**
- **Low energy consumption**



Delair® Etsiline CommPact

Specifications			
Model	Etsiline CommPact		
SPX article	028 1400		
Operation	Fully automatic and continuous		
Dry air capacity (l/h) at 20 mbar(g)	> 120		
Outlet dewpoint at 23°C and 83%RH	<-40°C		
Default working pressure (mbar(g))	20-30		
Power Supply (V)	48VDC		
Power consumption			
Drying (W)	13		
Regeneration (W)	55		
Stand-by (W)	6		
Sound level dB(A)	<43		
Weight (kg)	8		
Outlets, each with shut-off valve	8		
	Tubing 6/8 mm ID/OD		
Remote sense input	included, electronic valve		
Location	Indoors		
Enclosure	IP 20		
Ambient Temperature	-10°C - +45°C		
Relative humidity	M ax. 95%		
Mounting	Width (mm)	Depth (mm)	Height (mm)
- ETSI-Rack	535	200	88.9
- 19" -Rack	483	200	88.9
- Wall Mounting (optional)	483	300	88.9
- Floor/Table mounting (optional)	483	300	93
Alarms, combined one dry contact	Low -, high pressure, Run Time Humidity alarm (optional)		
Communication	TCP/IP Ethernet SNMP Dry contact SPDT		
Options		SPX Article	
Adaptor 90-264VAC/48VDC	028 1544		
Wall-Floor/Table mounting set	028 1565		

SPX FLOW TECHNOLOGY ETTEN-LEUR BV

Munnikenheiweg 41
4879 NE Etten-Leur
P: +31 76 5085568
F: +31 76 5085590
info.nl@spxflow.com