



DATA SHEET

Waveguide Connector

Kabelwerk **EUPEN** AG

DSCW1-Rev01/2007-08-07

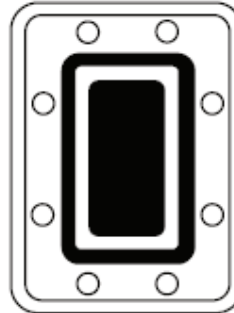
cable

EU 63 Elliptical Waveguide Connector - Gasket

CONNECTOR



FLANGE TYPES



CPR 137-G

TECHNICAL DATA

Electrical characteristics

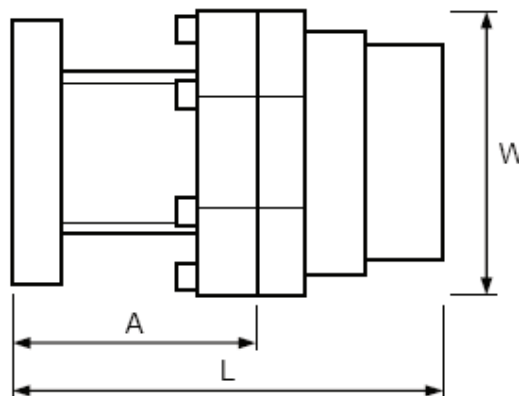
• Frequency range [GHz]	5.70 - 7.75
• VSWR (gated measurement) 5.70-7.125 GHz	< 1.04
• VSWR (gated measurement) 7.125-7.75 GHz	< 1.06

Mechanical characteristics

• Total length "L" [mm] (in)	105 (4.13)
• Length of transformer section "A" [mm] (in)	60 (2.36)
• Largest dim. across "W" [mm] (in)	79 (3.11)
• Weight [kg] (lb)	1.74 (3.84)

Technical data

• Max. pressure [Bar] (psi)	1.25 (18.1)
• Gas port	P 1/8"
• Temperature range [°C] (°F)	-40 to +80 (-40 to +176)
• Connector material	Silver plated brass
• Sealing	Threaded gasket



EUPEN CABLE USA

5181 110th Ave. North Unit D
Clearwater, FL 33760

www.eupen.us

Tel: - 727-527-7955 Fax - 727-528-0751