



DATA SHEET

Premium connector for waveguides

Kabelwerk

EUPEN AG

Rev.: 00/2016-11-08

cable

EU 52 Elliptical Waveguide

CONNECTOR

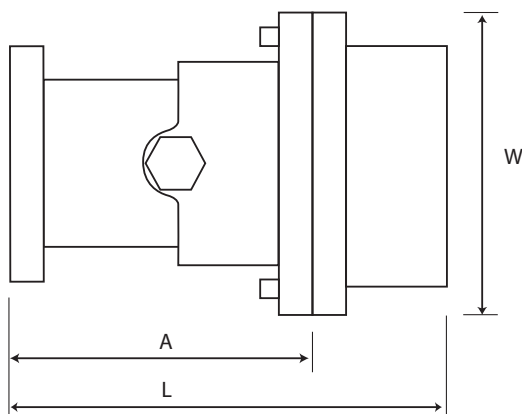


Electrical characteristics

- **Frequency range** GHz 5.600 - 6.425
- **VSWR** (gated measurement) < 1.03

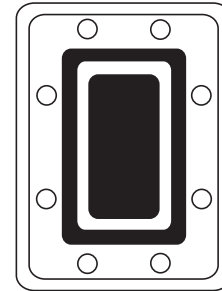
Mechanical characteristics

- **Total length "L"** mm (in) 103 (4.06)
- **Length of transformer section "A"** mm (in) 70 (2.76)
- **Largest dim. across "W"** mm (in) 91 (3.58)
- **Weight** kg (lb) 1.75 (3.86)



- **Max pressure** Bar (psi) 1.25 (18.1)
- **Gas port** P 1/8"
- **Temperature range** °F (°C) -40 / +176 (-40 / +80)
- **Connector material** brass

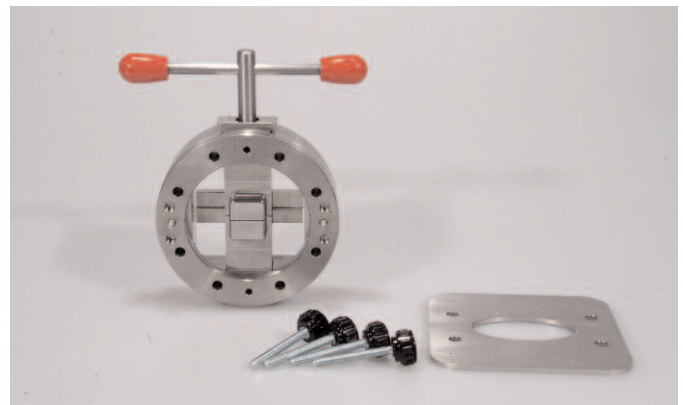
FLANGE TYPE



PDR 70
CPR 137-G

TOOL

Light-weight handheld flaring tool with saw guide



Part numbers

Connector	EU52-P-CPR137-G
	EU52-P-PDR70
Flaring Tool	EU-FT52-P
Saw guide	EU-SG52
Shim* for PDR flange	EU-SH52
Full thickness gasket** for CPR flange	EU-FGK52
Half thickness gasket** for CPR flange	EU-HGK52

* Use shim when mating two PDR flanges. Not required when mating PDR/UDR. Order separately.

** Use full-thickness gasket (supplied with connector) when mating two CPR-G flanges. Use half-thickness gasket (order separately) when mating CPR-G with CPR-F.